

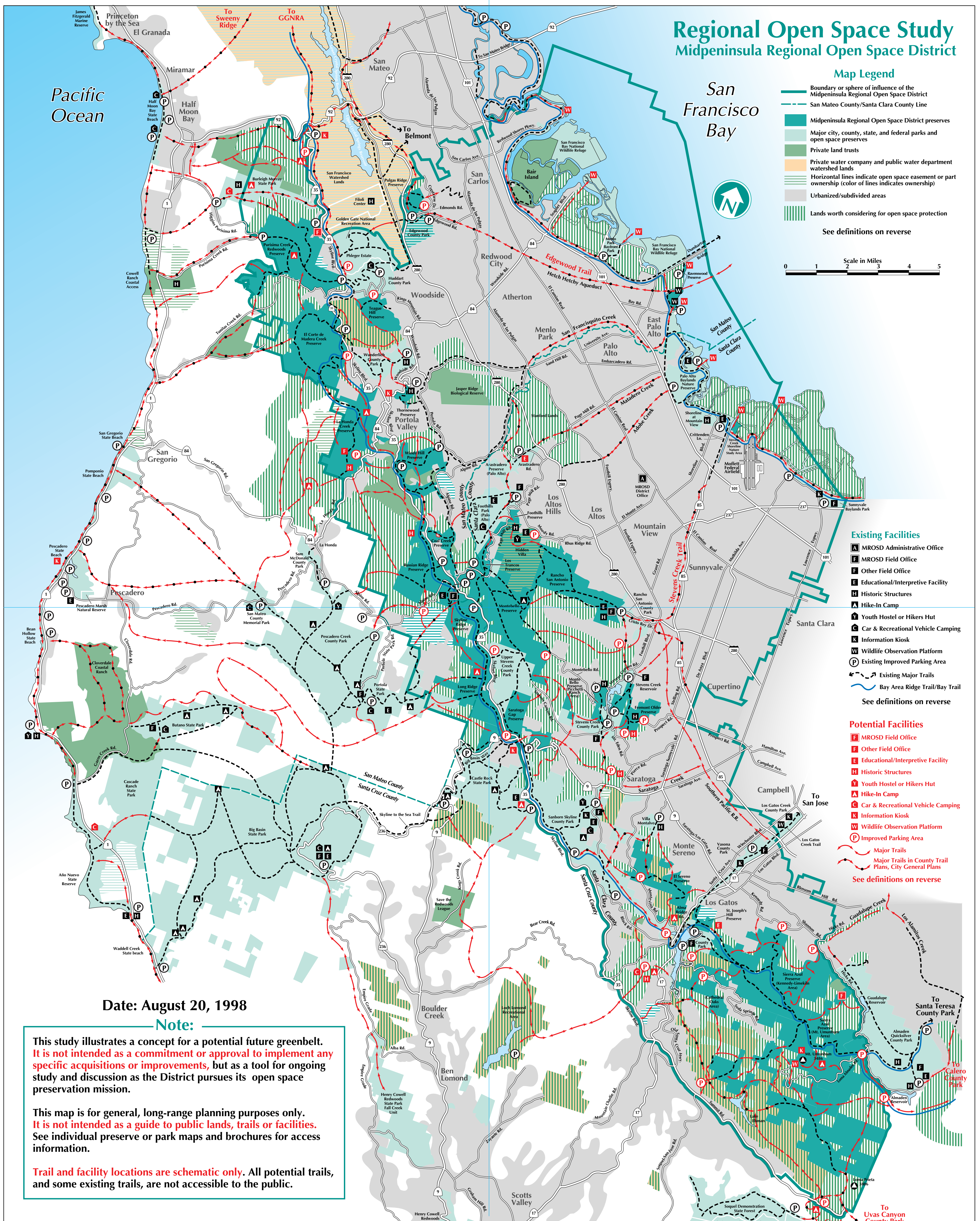
# Regional Open Space Study

## Midpeninsula Regional Open Space District

### Map Legend

- Boundary or sphere of influence of the Midpeninsula Regional Open Space District
- San Mateo County/Santa Clara County Line
- Midpeninsula Regional Open Space District preserves
- Major city, county, state, and federal parks and open space preserves
- Private land trusts
- Private water company and public water department watershed lands
- Horizontal lines indicate open space easement or part ownership (color of lines indicates ownership)
- Urbanized/subdivided areas
- Lands worth considering for open space protection

See definitions on reverse



- ### Existing Facilities
- MROSD Administrative Office
  - MROSD Field Office
  - Other Field Office
  - Educational/Interpretive Facility
  - Historic Structures
  - Hike-In Camp
  - Youth Hostel or Hikers Hut
  - Car & Recreational Vehicle Camping
  - Information Kiosk
  - Wildlife Observation Platform
  - Existing Improved Parking Area
  - Existing Major Trails
  - Bay Area Ridge Trail/Bay Trail
- See definitions on reverse

- ### Potential Facilities
- MROSD Field Office
  - Other Field Office
  - Educational/Interpretive Facility
  - Historic Structures
  - Youth Hostel or Hikers Hut
  - Hike-In Camp
  - Car & Recreational Vehicle Camping
  - Information Kiosk
  - Wildlife Observation Platform
  - Improved Parking Area
  - Major Trails
  - Major Trails in County Trail Plans, City General Plans
- See definitions on reverse

Date: August 20, 1998

### Note:

This study illustrates a concept for a potential future greenbelt. It is not intended as a commitment or approval to implement any specific acquisitions or improvements, but as a tool for ongoing study and discussion as the District pursues its open space preservation mission.

This map is for general, long-range planning purposes only. It is not intended as a guide to public lands, trails or facilities. See individual preserve or park maps and brochures for access information.

Trail and facility locations are schematic only. All potential trails, and some existing trails, are not accessible to the public.